



*I wish to go to
Walt Disney World®
Resort*

Avery, 6
congenital heart disease

Make-A-Wish®
METRO NEW YORK AND
WESTERN NEW YORK

2024 Impact Report



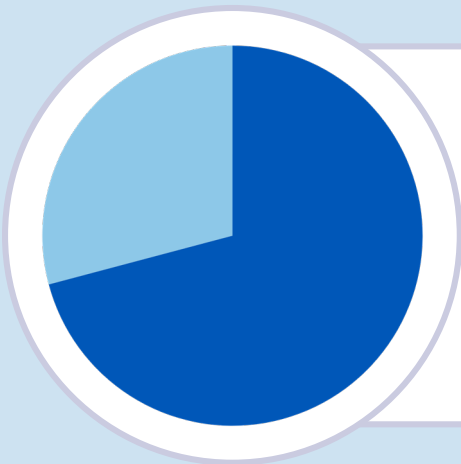
OUR MISSION

*Together, we create life-changing wishes
for children with critical illnesses.*



Make-A-Wish Metro New York and Western New York: FY24 by the Numbers

Total Wishes Granted: 927



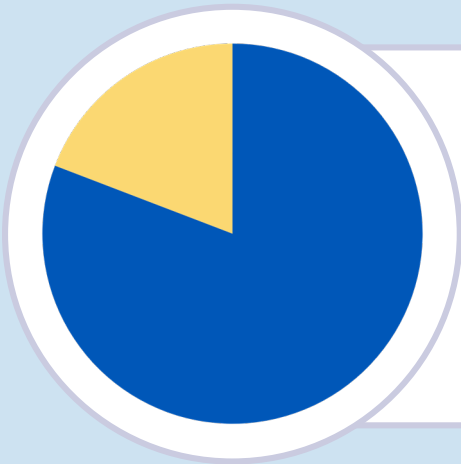
71%
Local Wishes: 657

Wishes granted to children from the local communities we serve in Metro New York and Western New York.

29%
Wish Assists: 270

Wishes granted to children from across the country and around the world who wish to visit New York.

Local Wishes by Region: 657



81%
Metro New York: 531
New York City and Long Island

19%
Western New York: 126
Buffalo, Rochester and surrounding counties

Our chapter granted **657 local wishes** in FY24 to children in communities ranging from highly populous Brooklyn to the rural counties of Western New York.

The communities we serve account for 70% of the population of New York State.

Medical Partner Commitment



639
qualified referrals



83%
of referrals were from a medical professional

The Children's Hospital at Montifiore was the top referring hospital in Metro New York, while Golisano Children's Hospital (Rochester) and Roswell Park Cancer Institute (Buffalo) were the top referring facilities in Western New York.

Volunteer Engagement



600+
Volunteers



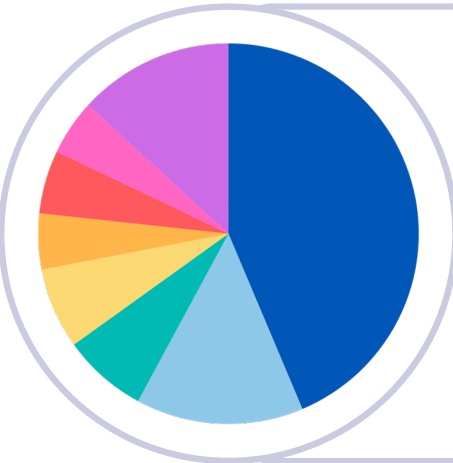
213
New volunteers trained in FY24

Volunteers are the backbone of Make-A-Wish. Whether they are meeting with children and families to discover a wish or working with staff on fundraising events, volunteers are at the heart of this organization.

Chapter wish-granting volunteers could speak **over 30 different languages** in addition to English to better serve our diverse community.

Who Are The Wish Kids We Serve?

FY24 Wish Kid Diagnosis



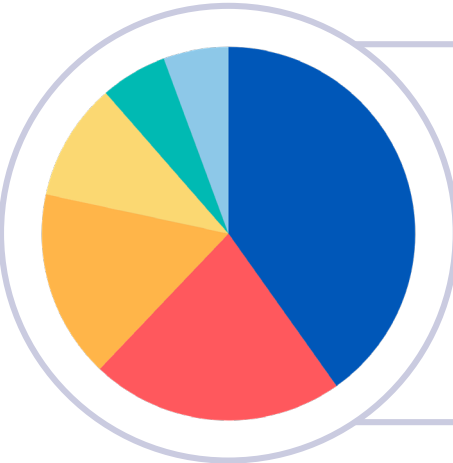
Cancer	44%
Blood Disorder	14%
Nervous System/ Neuromuscular Dis.	7%
Brain Tumor	7%
Kidney Disorder	5%
Respiratory Disorder	5%
Heart Disorder	5%
Other	13%

Two of the most common misconceptions about Make-A-Wish is that all of the children we serve have cancer and are terminally ill.

In fact, **less than half of the children we serve are referred with a cancer diagnosis.** There are hundreds of acute and chronic life-threatening illnesses that qualify for a wish.

And, most importantly, **the majority of children whose wishes we grant go on to live typical, healthy lives.**

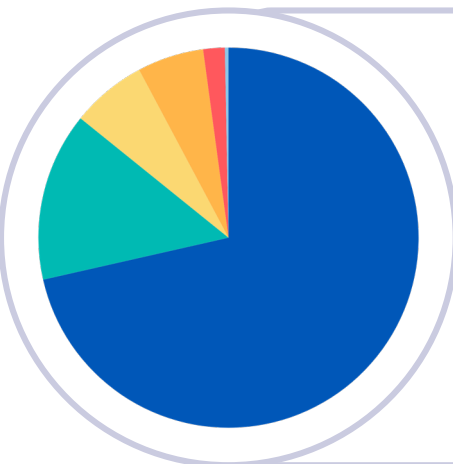
FY24 Wish Child Race



White	40%	Not Reported	10%
Black or African American	22%	Asian	6%
Other Race	16%	Two or more races	6%

Race disclosure is not mandatory for wish fulfillment; we respect families' choices not to provide this information.

FY24 Wish Child/Family Language

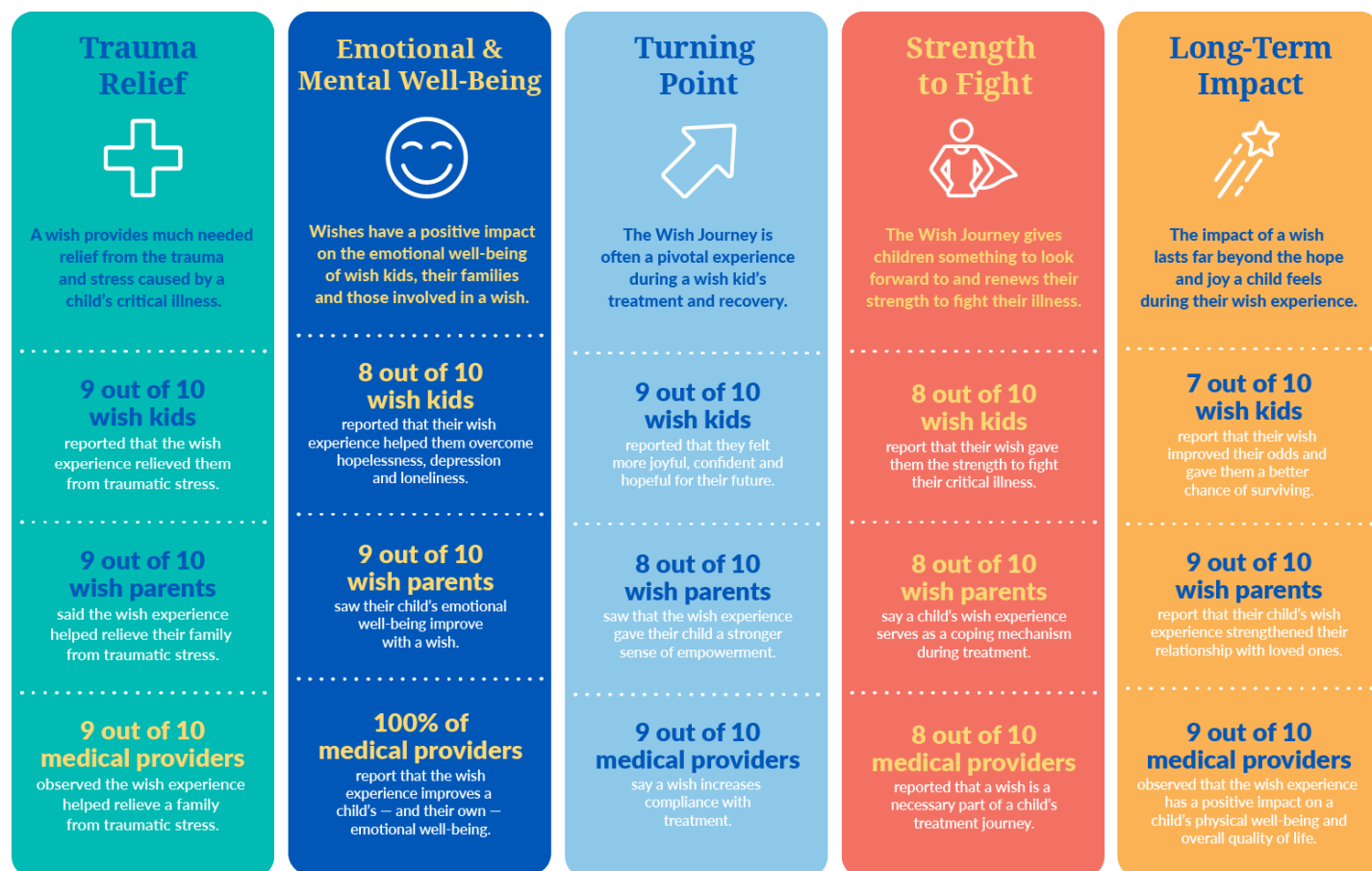


English	71%
Spanish	14%
English & Another Lang.	6%
English & Spanish	6%
Another Language	2%
ASL	.5%

New York City is the most linguistically diverse city in the world. The chapter utilizes Certified Languages International (CLI) for oral and written language translation to provide an equitable wish experience to every family we serve.

Why A Wish is Important: The Impact of Make-A-Wish

A spark of hope can change everything. Research shows that wishes have proven physical and emotional benefits that can give a child better health outcomes and increase their chances for survival.



More information and the full study results are available at wish.org/impact-study.

A Physician's Perspective on the Power of a Wish

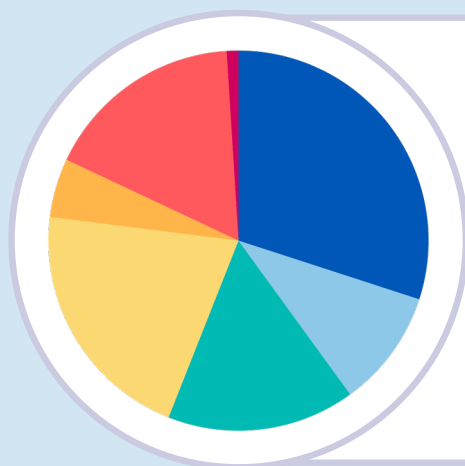
Jamie E. Flerlage, M.D., M.S., is the Division Chief for Pediatric Hematology Oncology and Associate Professor in the Department of Pediatrics at University of Rochester Medicine's Golisano Children's Hospital. Dr. Flerlage has witnessed firsthand the transformative power of wishes and describes their importance in the plan of care for her patients:

"One of the neatest things I've witnessed over and over from Make-A-Wish is the hope and peace that helps patients get through the hardest of times. From a holistic approach, it's like a tool in the toolbox. We can lean on Make-A-Wish for that patient and family to help give them hope when they really need it."

"When patients have these incredible experiences with their whole family, they can come back and during difficult times you can say, tell me about your wish again. And they just immediately brighten and show you the pictures and it can help take them back to a really positive place. I think it's really important. Our job to heal their bodies and their soul is part of that."

Managing Our Funds

Revenue and Other Support

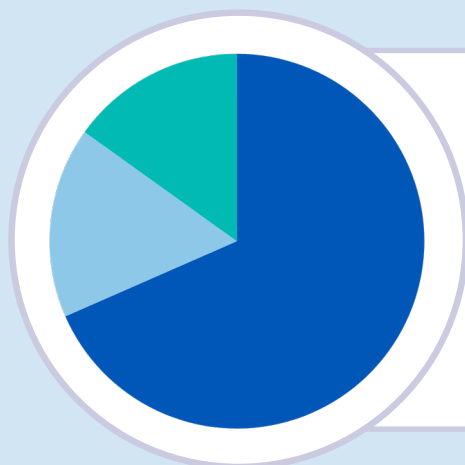


Individual Giving	\$4,921,633
Corporate Giving	\$1,706,078
In-Kind Donations	\$2,697,770
Events	\$3,440,377
Grants	\$ 846,291
Net Investment Gain	\$2,780,672
Other Income	\$ 212,511
Total Revenue	\$16,605,331

Your gift matters.

Individual and corporate giving are our greatest sources of funding. In-kind donations of goods and services as well as frequent flier miles and hotel loyalty points also help finance our mission.

Functional Allocation of Expenses

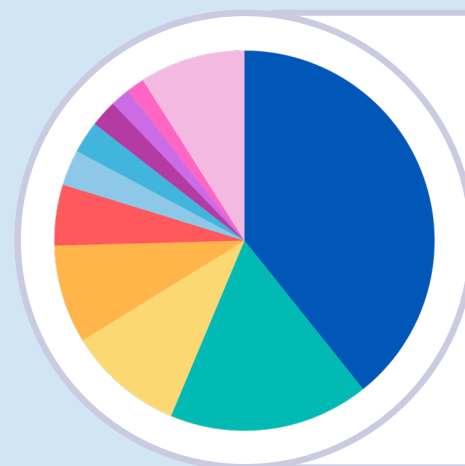


Program Services	68%
Fundraising	17%
Management and General	15%

Make-A-Wish Metro New York and Western New York is proud to be an **Accredited Charity Seal Holder** with the **Better Business Bureau of Metro New York**.



Program Expenses: Types of Wishes Granted



Disney Destination	258	Computer	18
Shopping Spree	112	Room Redecoration	15
Travel: Domestic	65	Electronics	11
Travel: Hawaii	55	Animal	10
Celebrity/Sporting Event	34	Other	59
Travel: Internat'l	20		

Visiting a Disney destination remained a popular wish in FY24, accounting for 39% of wishes.

However, wishes are as unique as the children who make them and we granted a wide array last year, from trips to Hawaii to celebrity meetings to shopping sprees and room redecorations.

FINANCIALS

MAKE-A-WISH FOUNDATION® OF METRO NEW YORK AND WESTERN NEW YORK, INC.

STATEMENT OF ACTIVITIES

YEAR ENDED AUGUST 31, 2024

REVENUES, GAINS AND OTHER SUPPORT	Without Donor Restrictions	With Donor Restrictions	Total
Public Support:			
Contributions	\$ 8,944,156	\$ 373,358	\$ 9,317,514
Grants	873,730	—	873,730
Total Public Support	9,817,886	373,358	10,191,244
Internal Special Events	4,183,543	—	4,183,543
Less Costs of Direct Benefits to Donors	(735,198)	—	(735,198)
Total Internal Special Events	3,448,345	—	3,448,345
Investment Gain, Net	2,053,124	727,546	2,780,670
Other Income	185,071		185,071
Net Assets Released from Restrictions	1,883,894	(1,883,894)	—
Total Revenues, Gains, and Other Support	17,388,320	(782,990)	16,605,330

EXPENSES

Program Services:			
Wish Granting	11,576,556	—	11,576,556
Training and Development	77,943	—	77,943
Public Information	422,482	—	422,482
Total Program Services	12,076,981	—	12,076,981
Support Services:			
Fundraising	2,906,655	—	2,906,655
Management and General	2,665,852	—	2,665,852
Total Support Services	5,572,507	—	5,572,507
Total Expenses	17,649,488	—	17,649,488

CHANGE IN NET ASSETS	(261,168)	(782,990)	(1,044,158)
-----------------------------	-----------	-----------	-------------

Net Assets - Beginning of Year	13,993,930	11,274,074	25,268,004
Net Assets - End of Year	\$ 13,732,762	\$ 10,491,084	\$ 24,223,846

Make-A-Wish Metro New York and Western New York receives no state or federal funding to grant wishes. We operate solely through donations from caring individuals, corporate partners, community support and foundations. Generous donors ensure that our chapter has the resources needed to provide life-changing wishes when children and families in our community need it most.



EXECUTIVE LEADERSHIP

John M. Healey
CEO & President

Anika Daughtry
Chief Mission Officer

Maureen Fitzgerald
Chief Development Officer

Whitney Viggiano
Chief Financial Officer

BOARD OF DIRECTORS

Sarah Pontius, Chair
Co-Founder & COO,
Artisan

John Cortese, Vice-Chair
Partner,
Apollo Global Management, Inc.

Marie Arrigo
Philanthropist

Sarah Boissins Ashley
Principal Legal,
Global Infrastructure Partners

William Brilliant
Partner,
Global Infrastructure Partners

Julia Bunyatov Goddard
Founder & CEO,
Sirmio Inc.

Steve Burns
President,
Rahr Enterprises

Jackie Cohen
Partner,
Ropes & Gray LLP

Brian Donaghy
Chairman & CEO,
Nivesh Capital LLC

Emma Fine
Philanthropist

Brittany Fitzgerald
Senior HR Business Partner,
First Eagle Investments

Trevor Freeland
Managing Director,
Deutsche Bank

Fred Gibbons
Principal,
Deloitte Transactions and Business
Analytics LLP

AnnMarie Imperato, Secretary
Vice President, Governance and
Corporate Secretary,
Wafra, Inc.

Michael Mockus
Partner and Northeast Deals Leader,
PwC

Michael Nenner
President & COO,
Metrovest Equities/Gurney's
Resorts

Jim O'Donnell
Vice Chair,
Citi

Sheila Peluso
Senior Managing Director, CHRO
and Senior Legal Officer,
Cerberus Capital Management, L.P.

Arturo Poire
Partner,
Apollo Global Management, Inc.

Tracie Rodburg
Senior Vice President, Global
Partnerships,
National Football League

Scott Schiller
Media Executive

Naveen Shahani
Principal,
Clearlake Capital Group, L.P.

Rabia Sheikh
Senior Vice President, Chief
Counsel, Global Risk & Regulatory
Affairs,
Visa

Margie Tan
Fashion Designer & Philanthropist

Stephen Thomas
Partner,
Bain Capital, LP

Andria Trinidad, Treasurer
Principal,
Apollo Global Management, Inc.

Lilian Y. Zhou
Investor, Entrepreneur and
Independent Board Director

CONTACT US

Headquarters
1745 Broadway, 22nd Floor East
New York, NY 10019
(212) 957-9474

Buffalo Regional Office
100 Sylvan Parkway, Suite 101
Amherst, NY 14228
(716) 810-9474

Long Island Regional Office
445 Broadhollow Road, Suite 110
Melville, NY 11747
(631) 585-9474

Rochester Regional Office
10 Office Parkway, Suite 500
Pittsford, NY 14534
(585) 272-9474

wish.org/newyork

Follow Us:

