

# Make-A-Wish®

IDAHO

[DONATE](#) [VOLUNTEER](#) [LEARN MORE](#)



## WISHES GRANTED

1. Wishes Granted
2. Wish Story
3. Volunteer Spotlight
4. Serving Up Wishes
5. Walk for Wishes Magic Valley
6. Join the Wish Community
7. Stock Giving
8. Planned Giving
9. Upcoming Events

## A New, Blue Playhouse



**Make-A-Wish**  
IDAHO

*I wish to have  
a blue playhouse*

Keasy, 3  
nervous system disorder



Three-year-old Keasy has a rare condition that causes potentially dangerous skin lesions as well as other health issues. She cannot be in direct sunlight for extended periods of time, and to make matters worse, she loves outdoor activities. She's especially fond of camping with the family and riding ATVs with dad.

The good news is that Keasy is "tough as nails." According to mom, Shea, smart and sassy Keasy can handle most things with a smile on her face.

Keasy wished for an outdoor playhouse, so she could have a safe place to play and still be outside. However, Keasy requested two specific modifications to her playhouse. First, she wanted the playhouse to be Cookie-Monster blue so it resembled her favorite Muppet, and secondly, she wanted the playhouse to have a kitchen.

Keasy loves to play chef. She'll whip up a fantastic, (and mostly imaginary) seven-course meal or take your lunch order at a moment's notice. You don't even have to ask!

That's why Keasy's new, blue playhouse has been outfitted with a refrigerator, a sink and an oven as well as plates, pans and cooking utensils. Keasy has everything she needs to cook up simulated suppers, daydreamt dinners or any other make-believe meal.

"[Thank you for making my wish come true](#)," Keasy said.

Help Make Wishes Like Keasy's Come True



# LINDSEY JULA

WORK U INTERN

From Boise, Idaho

## PERSONAL PROFILE

### Occupation:

Boise State Student

## VOLUNTEER PROFILE

### Years Granting Wishes:

1st Year

## Q & A

### What's your role with MAW Idaho?

Boise Work U Intern. I assist with tasks around the office.

### What would your wish be?

To meet Justin Bieber

### What was your inspiration to help?

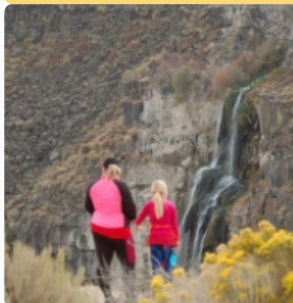
I learned about the Work U Program through a friend who had done it the previous semester.



Now in its 19th year, Serving Up Wishes is a unique fundraiser that partners Make-A-Wish® Idaho with Boise State University to make wishes come true for Idaho children. Approximately 80 Boise State University student-athletes, representing every NCAA and Boise State-sponsored men's and women's sport, take part in this high-energy, fun-filled night of nonstop entertainment.

During the evening, Boise State student-athletes showcase their many talents to the delight of the event guests. The evening includes a sit-down dinner, live auction and a presentation from a wish child and/or their family that highlights their special experience.

**This Event Is Sold Out**



Make-A-Wish.  
**WALK  
FOR WISHES®**  
Magic Valley

## JOIN US THIS WEEKEND IN TWIN FALLS

The 6th Annual Walk for Wishes Magic Valley will be held on Saturday, September 25. Registration starts at 9:30 a.m. with the walk kicking off at 10 a.m. sharp. This year's walk will be an in-person event held at the Twin Falls Visitor

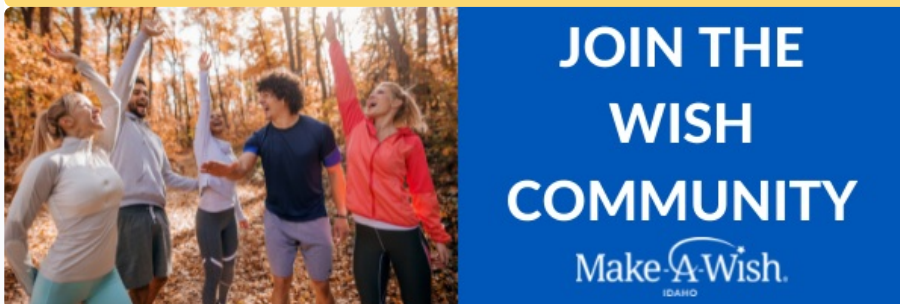
Center.

Walk for Wishes Magic Valley is an event that celebrates wishes that have been granted in Idaho, while raising funds for future wishes. You can sign up today as a sponsor, walk team, or volunteer. There is no registration fee; though Make-A-Wish Idaho asks participants to raise \$100 or more to help grant wishes for Idaho wish kids. Walkers can sign up at [Idaho.wish.org](http://Idaho.wish.org).

Due to the pandemic, there are currently 145 Idaho wish kids waiting on their wishes. As the world opens back up, Make-A-Wish Idaho will need extra support to ensure that waiting wishes are granted quickly and safely. In the meantime, Make-A-Wish Idaho has been steadily granting wishes with a focus on the “to have” and “to be” wishes.

Make-A-Wish Idaho’s goal is to raise over \$50,000 from the walk, enough money to grant over 7 heartfelt, local wishes. To participate in the Walk, register at [Idaho.wish.org](http://Idaho.wish.org). For more information, please contact Helene Peterson at 208.345.9474 or by email at [hpeterson@idaho.wish.org](mailto:hpeterson@idaho.wish.org).

Register for the Walk



### Are You A Former or Current Wish Kid or Wish Parent?

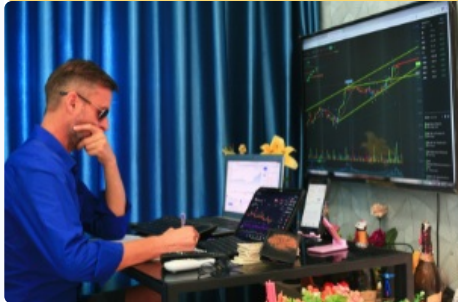
Make-A-Wish Idaho is introducing a brand-new program, the Wish Community Program. The Wish Community is a place where former and current wish families can come together to chat, swap stories and take part in new wishes and in the future of Make-A-Wish Idaho.

The Wish Community's primary aim is to foster continued relationships with wish families after their wishes have been granted. We've met so many wonderful families over the course of the last 35 years, and we'd like those relationships to continue for another 35 years and beyond.

The program, still in its founding stages, will be unveiled over the course of the next year, but there are a few things to know.

- There are no costs or obligations to join the wish community. One only needs to be a former wish kid or parent to join, and joining simply for the continued fellowship of other wish families is not only permitted but encouraged!
- Make-A-Wish's strongest assets are the stories that we can tell about our wish kids. Those stories are your stories, and we'd love to give you the opportunity to share them in variety of ways: speaking engagements, commercials, social media, etc. These opportunities will be presented to the Wish Community and all opportunities will always be voluntary.
- The group will be run via a Facebook Group and through a newsletter to start. We are well aware that not everyone uses Facebook, and we'll be looking into possible alternatives to that platform in the near future.

Next week, Make-A-Wish America will be sending out an email to all Idaho wish families asking to join the Wish Community. Until then you can send your questions to Communication and Development Coordinator Josh Peterson at [jpeterson@idaho.wish.org](mailto:jpeterson@idaho.wish.org) or [join the Facebook Group](#) at this link.



## Stock Giving

### Donate Stocks or Other Assets

If you have appreciated capital assets you've held for more than a year, such as stocks, there may be advantages to donating those directly to Make-A-Wish Idaho instead of selling them and paying tax first and then donating the net proceeds.

By donating appreciated assets directly to a not-for-profit:

1. You allow the organization to receive the full pretax value of those appreciated assets.
2. You may avoid long-term capital gains taxes you might otherwise owe.
3. You may be able to deduct the full value of those assets on your tax return as a charitable gift.

For example: Suppose you sell \$1,000 worth of stock that you've held for more than a year to donate the proceeds to a charitable organization. After paying any capital gains taxes, you'd be left with less than \$1,000 to give to the charity. But if you were to donate that same \$1,000 of appreciated stock directly to Make-A-Wish Idaho:

1. The organization can usually sell the stock and receive the full \$1,000, tax-free.
2. You could potentially deduct the full \$1,000 value of your donation on your tax return.

To download the securities donation form, [click here](#). For more information, please contact Janie Best at 208.297.6822 or [jb主@idaho.wish.org](mailto:jb主@idaho.wish.org)



## Planned Giving

### The Importance of Planned Giving at Make-A-Wish Idaho Why Your Future Gifts Matter

At Make-A-Wish Idaho, we rely on donations from friends like you to help us grant the wishes of children battling critical illnesses. These wishes bring hope to kids when they need it most.

**But what about the future? Though we've accomplished a lot, there's still so many children who need our help. Planned gifts help us get there.**

**When you make a planned gift to Make-A-Wish Idaho, you:**

- **Provide us with solid financial footing.**
- **Help us plan for the future with confidence.**
- **Ensure we can continue transforming lives through hope.**

**There are several ways you can make a planned gift to Make-A-Wish Idaho, many of which offer you benefits in return. Some popular gifts include:**

- **Giving a gift in your will or living trust. This costs you nothing today and is easy to change as needed.**
- **Naming Make-A-Wish Idaho as a beneficiary of your retirement plan assets. A simple form is all that's needed to make this gift.**
- **Donating appreciated stock. When you give stock that is worth more now than when you bought it, you can avoid capital gains tax.**

### **Find Your Gift**

**A planned gift is more than just another way to give. It's a way to create your legacy and ensure your support for Make-A-Wish Idaho continues even after your lifetime. Contact Janie Best to get started at [jbest@idaho.wish.org](mailto:jbest@idaho.wish.org).**

The information in this publication is not intended as legal or tax advice. For such advice, please consult an attorney or tax advisor. Figures cited in any examples are for illustrative purposes only. References to tax rates include federal taxes only and are subject to change. State law may further impact your individual results.

---



### UPCOMING EVENTS

SEPT 21	Elevation Labs Golf Tournament
SEPT 25	Walk For Wishes Twin Falls
OCT 19	Serving Up Wishes
NOV 1	Families for Wishes Begins
NOV 1	Macy's Believe Begins
NOV 30	Giving Tuesday
JAN 1	The Great Polar Bear Challenge

[Attend An Event](#)

Make-A-Wish Idaho  
310 W. Idaho Street  
Boise, ID 83702  
[idaho@idaho.wish.org](mailto:idaho@idaho.wish.org)



This email was sent to {{ contact.EMAIL }}  
You received this email because you are registered with Make-A-Wish Idaho

[Unsubscribe here](#)

